



## ***AIRPORT UPGRADES - KODIAK, AK***

Many of the airport runways in Alaska are not up to FAA standards for the aircraft that use them. FAA has given the state a pass for a long time, but now many must come into compliance by adding length, width, expanding safety areas or all three. The runway at Kodiak, AK required expanding the safety areas. As the runway is near the shoreline some of these safety areas include the marine waters offshore.

### **SCOPE AND APPROACH**

EHI, in support of an EIS for FAA to provide airport upgrades, deployed four bottom-mounted acoustic Doppler current profilers in St. Paul Harbor and Woody Island Channel. Three of the meters measured currents and the fourth measured currents and waves. Due to a steady wind at 30 knots, it was necessary for the deployment vessel to set anchor at each location to minimize boat motion during deployment of the current meters. Once the boat was anchored and stable, the bottom mounts were lifted overboard and then lowered to the seabed. A positional fix was taken prior to release of the deployment line from the bottom mount. This procedure worked well and was repeated at each deployment site.

### **RESULTS**

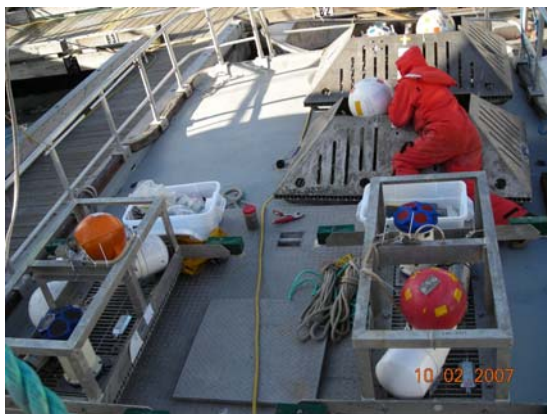
The four bottom mounts were recovered after a one month deployment. All meters recorded the full deployment. Two of the bottom mounts were redeployed for a second month. Final recovery of the two bottom mounts was scheduled for mid December during a period of winter storm activity. A short break in the inclement weather patterns enabled a quick recovery during one afternoon. Following retrieval of the bottom mounts both meters were downloaded and verified to contain the full deployment records.

### ***Client Reference***

Mr. Doug Jones  
Coastline Engineering  
(907) 338-6626  
dougjones@gci.net

### ***Project Timeframe***

September – December 2007



*Preparing four ADCP bottom mounts for deployment.*

